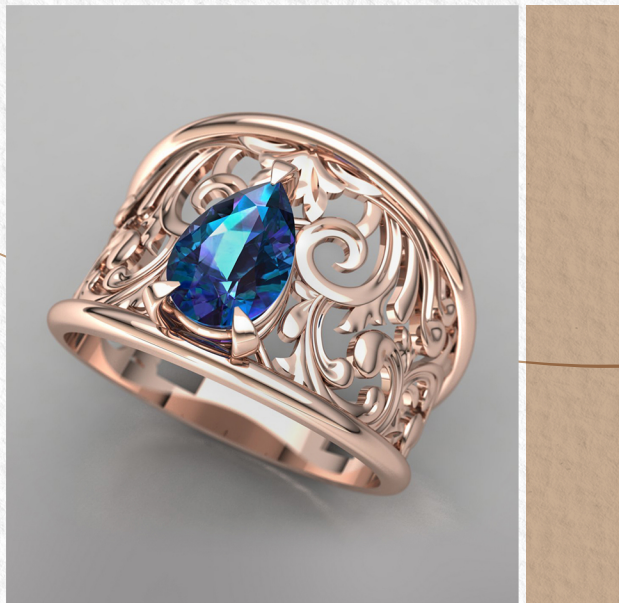




## Portfolio

Crafting Unique Stories through Design



Vahide Shafie

Graphic and Jewelry Designer



# Vahide Shafie

## Jewelry Designer | Graphic Designer

Step into a world where imagination meets craftsmanship.

I'm Vahide, an accomplished designer with a rich tapestry of experience in the realms of graphic and jewelry design. My creative prowess extends to crafting exquisite designs for earrings, bracelets, pendants, but it's in the realm of distinctive ring designs where my expertise truly shines.

I specialize in crafting unforgettable pieces suitable for every occasion, whether it's a casual outing, a costume event, or a momentous ceremonial gathering. Drawing from a deep well of artistic inspiration and a keen sense of aesthetics, my work has captivated a diverse clientele, encompassing both traditional and contemporary jewelry enthusiasts hailing from Europe to the Middle East.

My mission is simple yet profound: to offer exclusive jewelry that speaks to the discerning taste of every woman who appreciates life's finer pleasures and to honor every man who cherishes the women who bring elegance and grace into their lives.

Within this portfolio, you'll catch a glimpse of my journey, a journey dedicated to turning imaginative concepts into visual masterpieces that leave an indelible mark on the senses. Welcome to my world of design, where beauty, craftsmanship, and passion converge to create something truly extraordinary.



### Technologies

Gemvision Matrix 9.0  
Adobe Photoshop  
Adobe Illustrator  
Cinema4D

### Skills

Jewelry Design  
Graphic Design  
Logo Design  
Brand Identity

### Contact

 vahide-shafie  
 vahide.shafie@gmail.com  
 +372 5199 1216  
 vsh.gallery



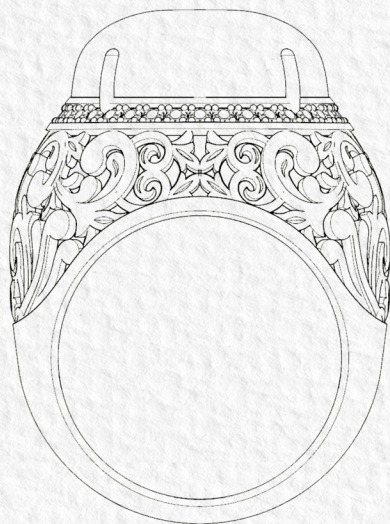
### Eslimi Ring

Carat: 750 [18]

Weight: 5 grams

Metal: Rose Gold

Stone: Alexandrite, Diamond



Eslimi patterns, with their intricate designs and geometric beauty, inspire exquisite jewelry creations



## Galaxy Ring

Carat: 750 (18)

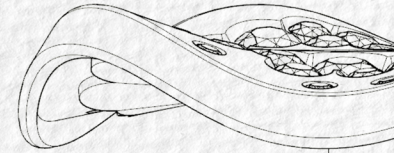
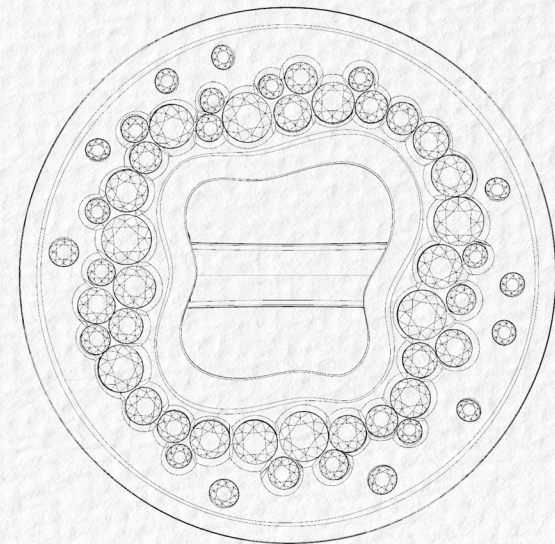
Weight: 4.2 grams

Metal: Rose Gold

Stone: Alexandrite

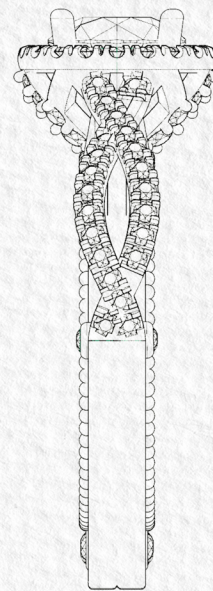
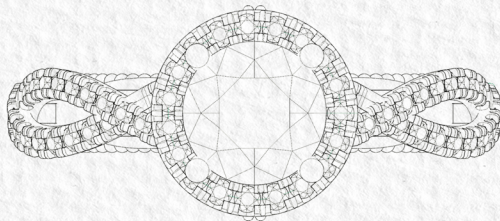
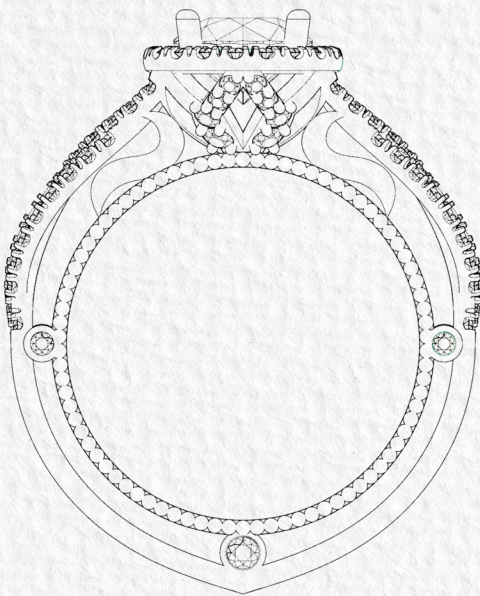
Diamond

A flush setting ring is a type of jewelry design where gemstones are set directly into the metal of the ring, creating a smooth and seamless surface. This setting style is known for its sleek and contemporary look, as the stones sit level with the ring's surface, offering both security and a minimalist aesthetic.



## Crafting Precious Dreams

Delve into the world of jewelry design. With expertise in Gemvision Matrix, Materialise Magics, and Gemology. I create jewelry that is a reflection of individuality. Each piece holds a story waiting to be told through its exquisite craftsmanship.



## Wedding Ring

Carat: 750 [18]

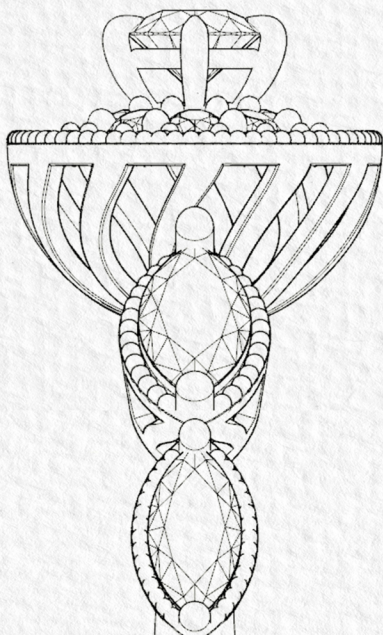
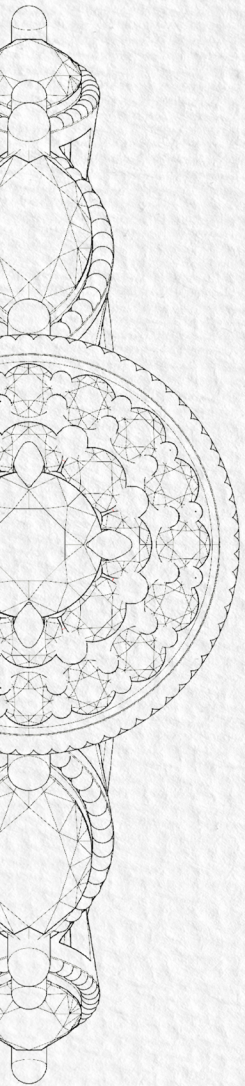
Weight: 2.4 grams

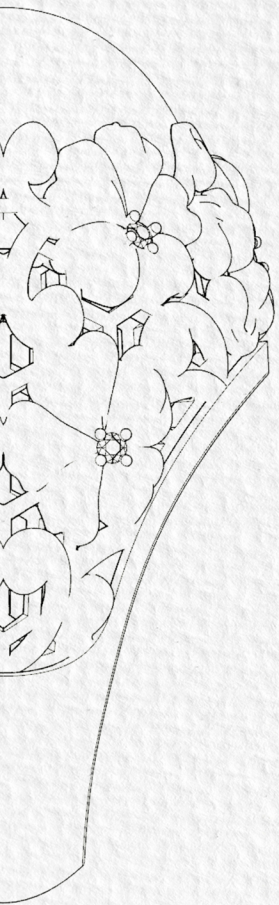
Metal: Rose Gold

Stone: Diamond



The art of designing a wedding ring combines creativity, craftsmanship, and emotion to create a symbol of enduring love and commitment.





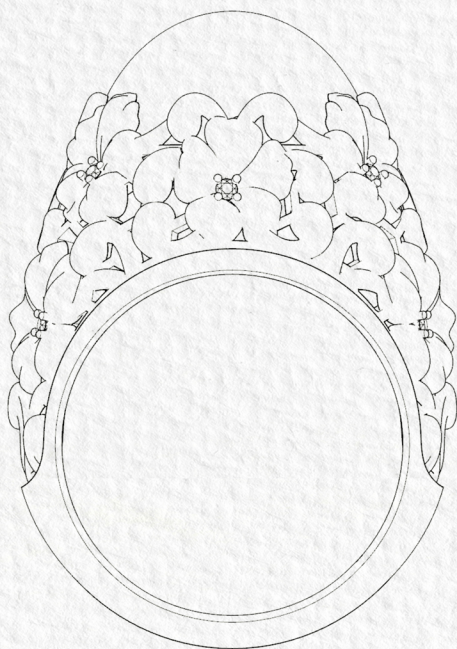
## Floral Design

Carat: 750 [18]

Weight: 5 grams

Metal: Rose Gold

Stone: Turquoise, Dimond



The "floral" design is a popular motif in jewelry, featuring flower and petal patterns. It creates a natural and elegant look, often adorned with diamonds or precious gemstones. This design is perfect for those who appreciate feminine and graceful jewelry.



### Queen Ring

Carat: 750 [18]

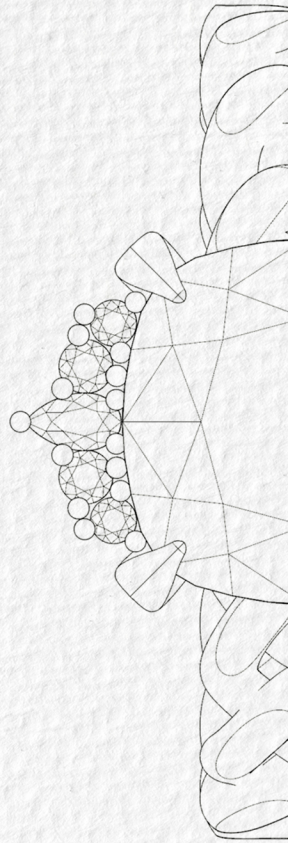
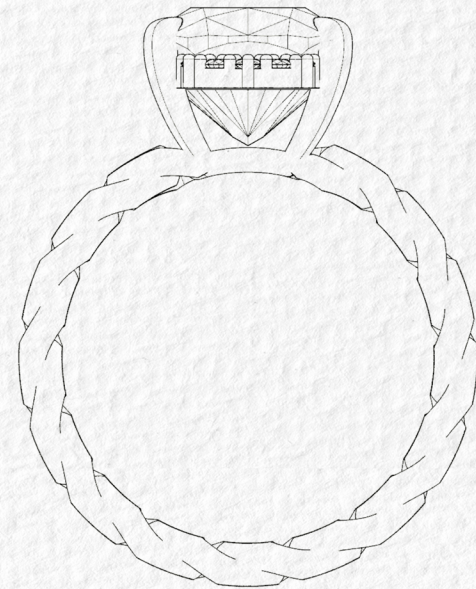
Weight: 3.5 grams

Metal: Rose Gold

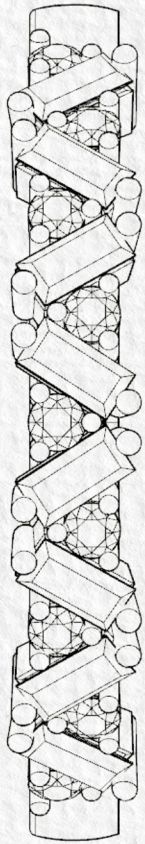
Stone: Alexandrite

Diamod

Alexandrite is a rare gemstone prized for its color-changing ability. It shifts from greenish-blue in daylight to purplish-red under incandescent light, making it a captivating choice for jewelry design. Its rarity and beauty make it highly valued by collectors and jewelry enthusiasts.







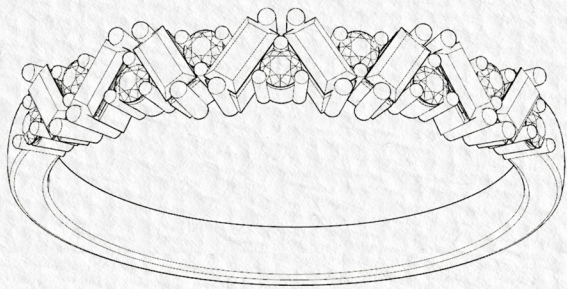
## Zigzag Ring

Carat: 750 [18]

Weight: 2.5 grams

Metal: Rose Gold

Stone: Topaz Sky Blue, Diamond



A zigzag ring is a unique and eye-catching jewelry piece known for its angular design, featuring sharp, alternating angles for a bold and contemporary look. It's a popular choice for modern and fashion-forward accessory enthusiasts.



In ring design, the pattern known as "Shamsa" or "Sunburst" consists of radiating rays centered around a point, resembling the sun.

### Shamsa Ring

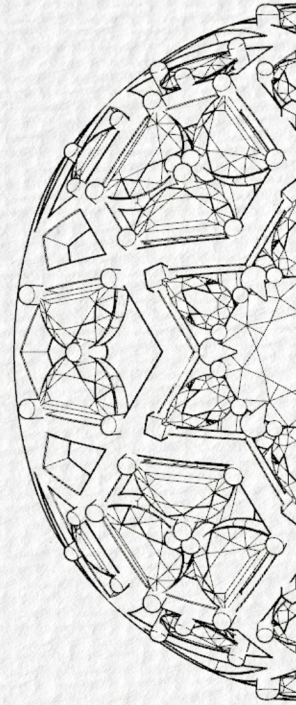
Carat: 750 (18)

Weight: 3.5 grams

Metal: Rose Gold

Stone: Red Ruby

Half Moon , Diamond



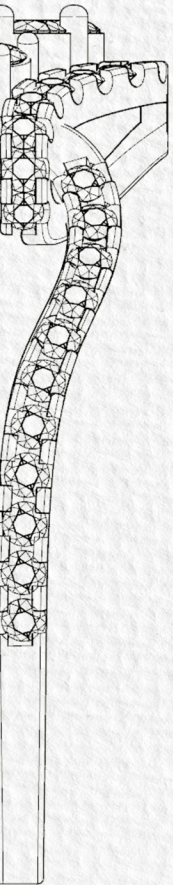
## Creative Process

Behind every design lies a thoughtfully crafted process.

I collaborate closely with clients, ensuring their visions are brought to life. Whether it's the allure of a graphic design or the intricacy of a jewelry piece, my work reflects dedication and passion.

## Vision for Design

My design philosophy revolves around innovation, elegance, and connection. Every stroke of creativity is guided by a vision to evoke emotions, tell stories, and inspire. Join me in celebrating the beauty of design through this portfolio.



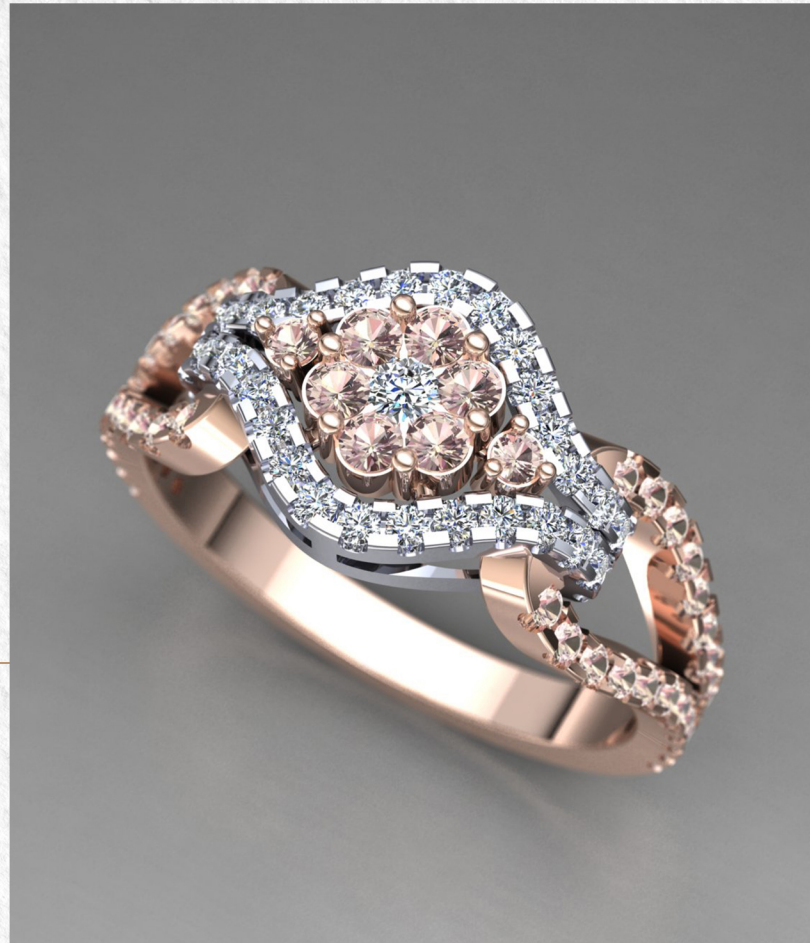
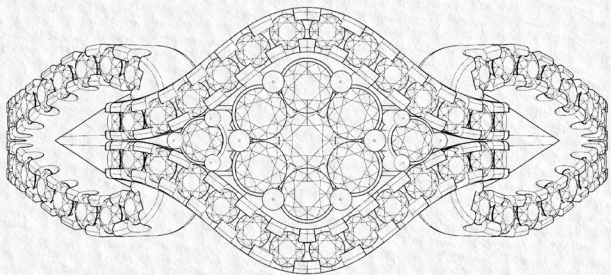
## Flower Ring

Carat: 750 [18]

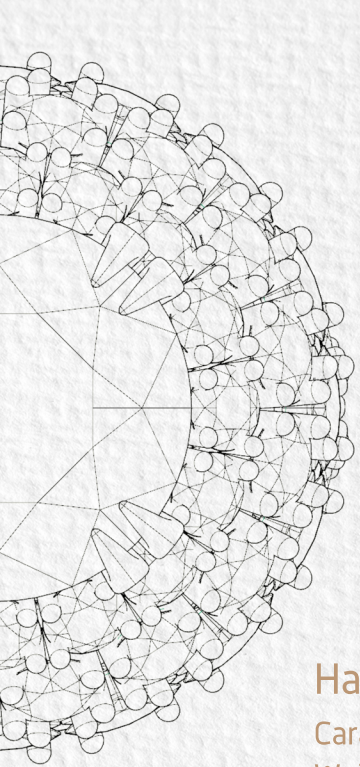
Weight: 4 grams

Metal: Rose Gold, White Gold

Stone: Diamond



The micro setting, also known as the micro-prong setting, involves multiple small diamonds that are secured in place by small (micro) prongs. Similar to the pavé setting, micro set diamonds give an encrusted look and add to the overall design of the ring.



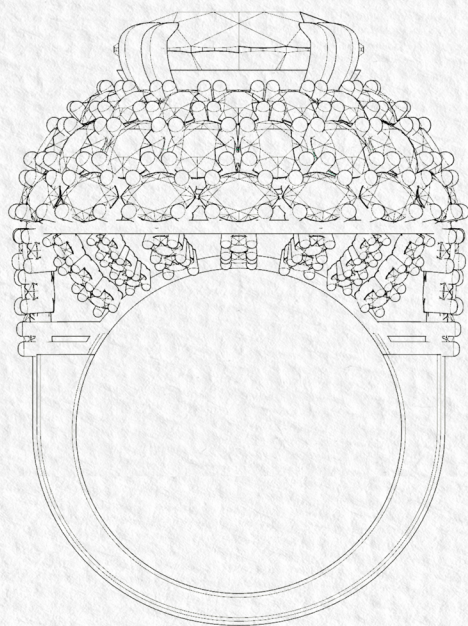
## Harry Winston Design

Carat: 750 (18)

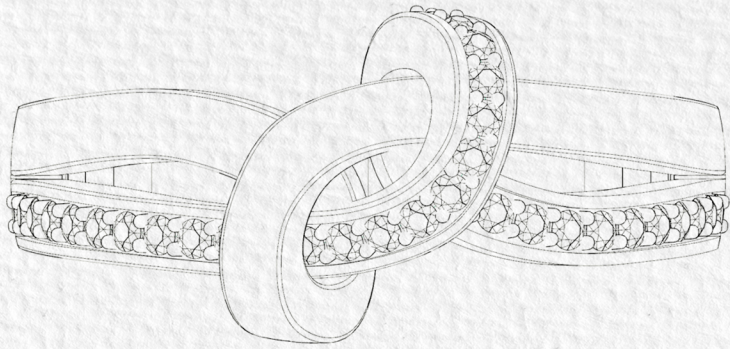
Weight: 4.2 grams

Metal: Rose Gold

Stone: Alexandrite, Diamond



Harry Winston: Renowned American jeweler, donated Hope Diamond and Portuguese Diamond to Smithsonian, known as "King of Diamonds," founded Harry Winston Inc. in 1932, iconic in jewelry history.



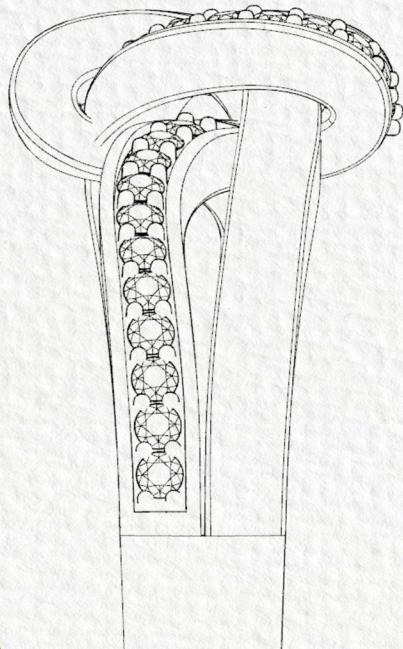
## Knot Ring

Carat: 750 [18]

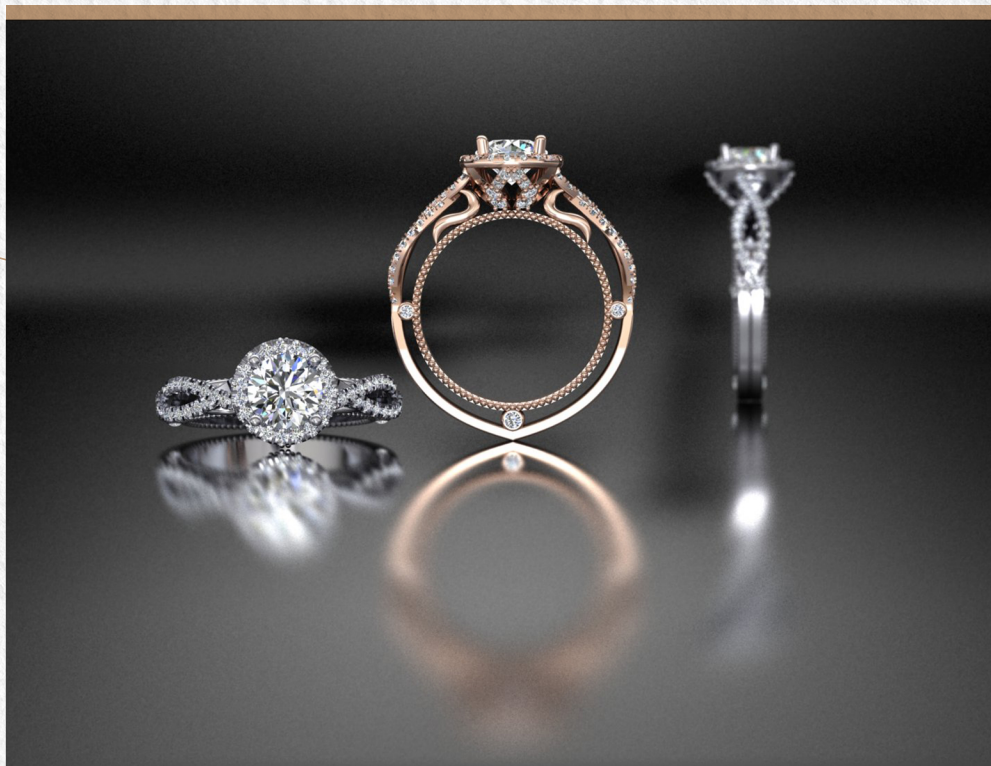
Weight: 3.2 grams

Metal: Rose Gold, White Gold

Stone: Ruby



A knot ring is symbolic jewelry with a design often featuring knots or intertwining patterns. It represents different aspects of relationships like love, friendship, or unity and is commonly selected as an engagement or wedding ring to symbolize the lasting connection between two individuals.



[in vahide-shafie](#) [vahide.shafie](#)

